

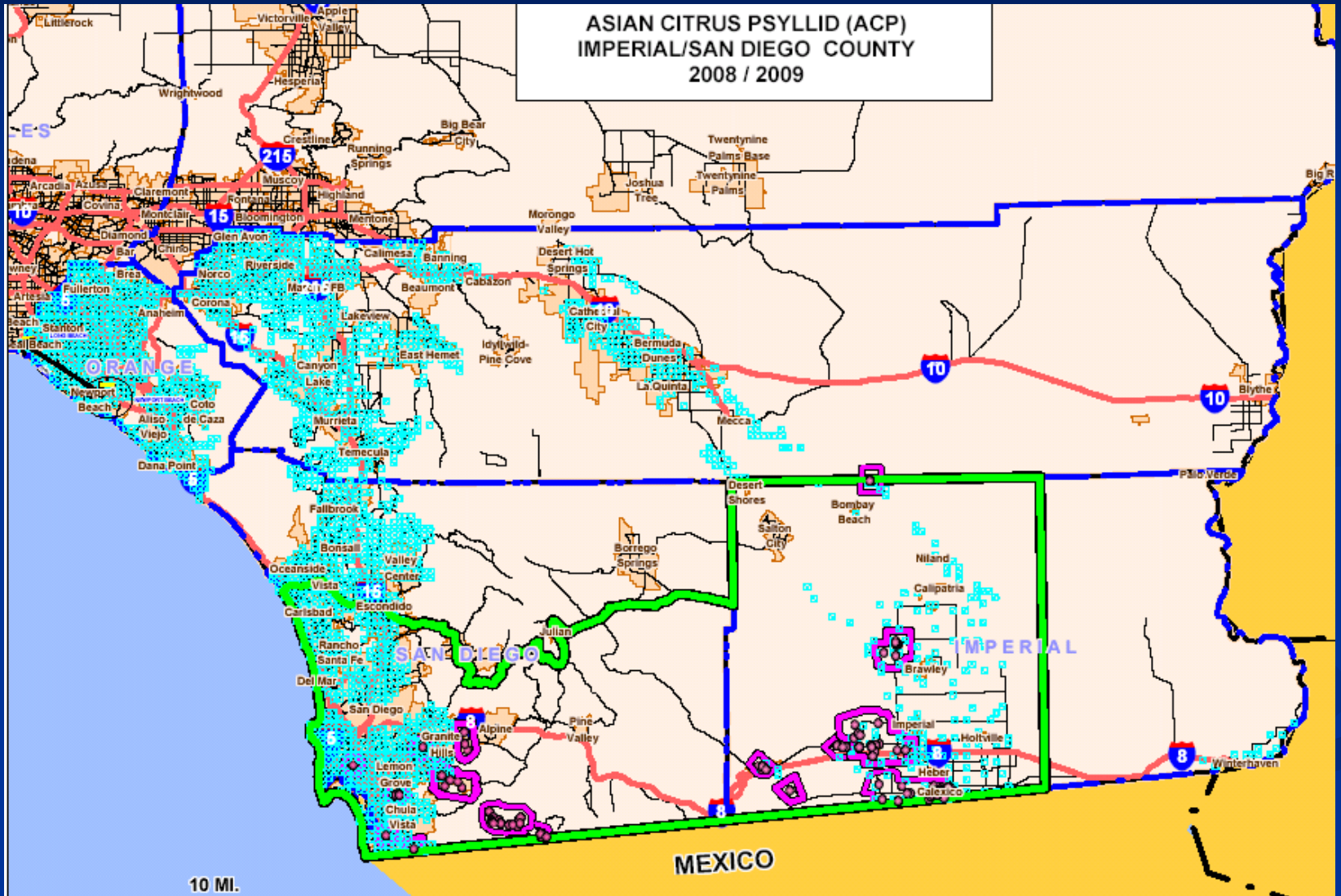
Citrus Research Board Field Operations Activities

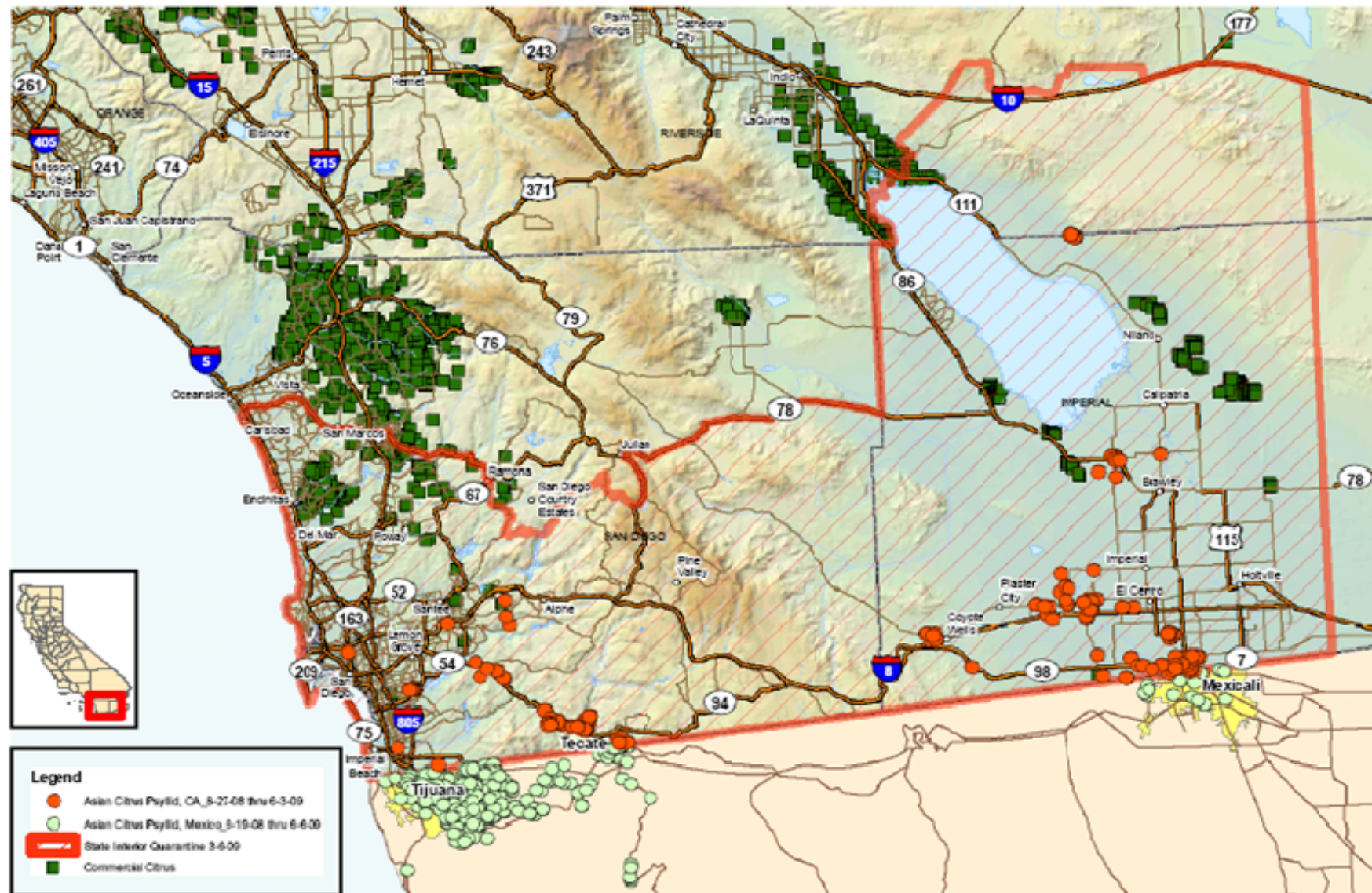
- Augment CDFA detection activities
- Deploy GPS technologies including handheld data loggers, bar codes
- Create and maintain central database
- Develop statewide training programs for PCA's, Master Gardeners, others

Augmentation of Field Activities

- Concentrate on detection within commercial settings
- Develop improved detection capabilities

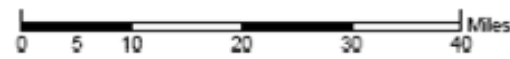
ACP Trap Placements 03/2009



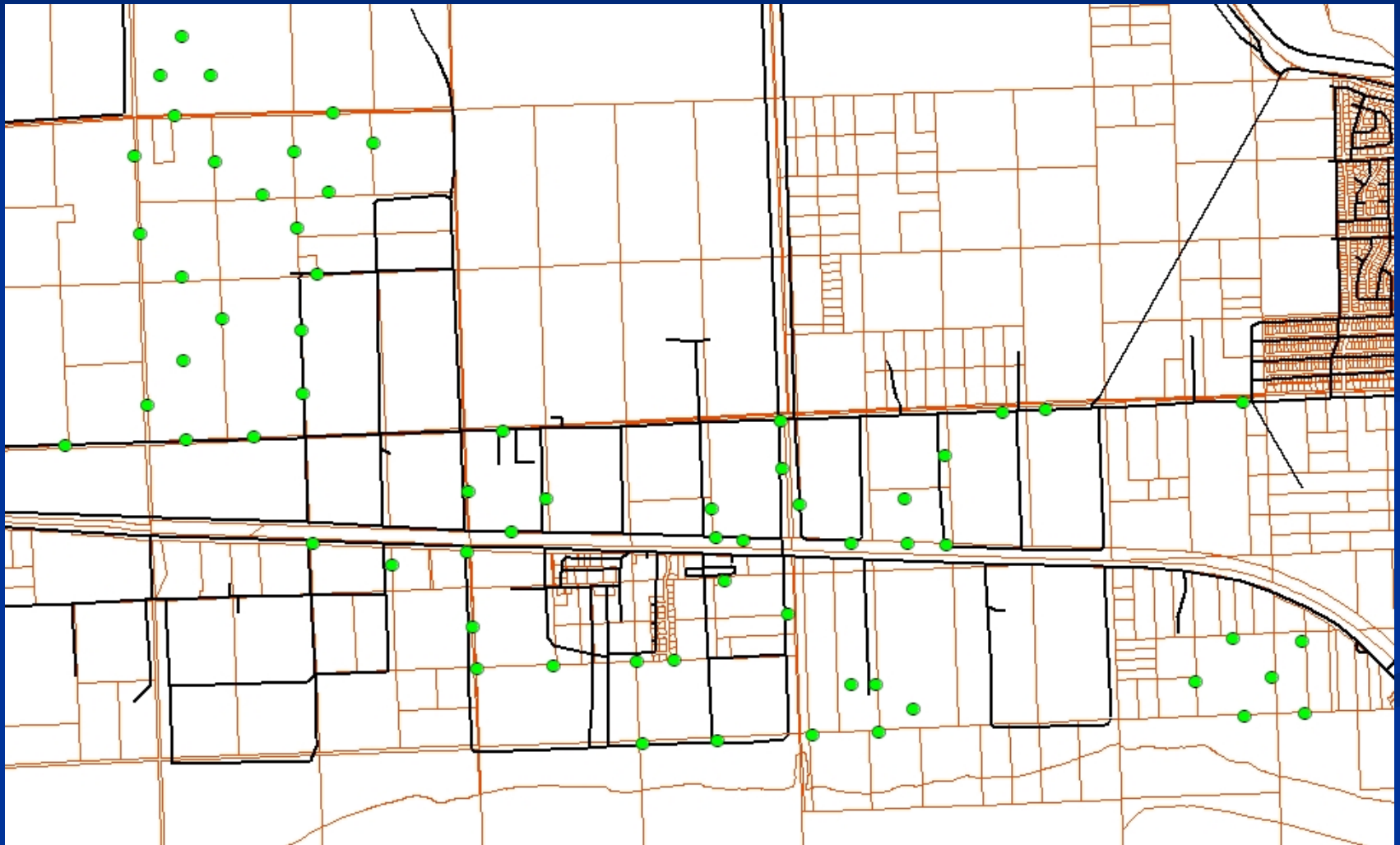


Legend

- Asian Citrus Psyllid, CA, 8-27-08 thru 6-3-09
- Asian Citrus Psyllid, Mexico, 3-19-08 thru 6-6-09
- State Insect Quarantine 3-6-09
- Commercial Citrus



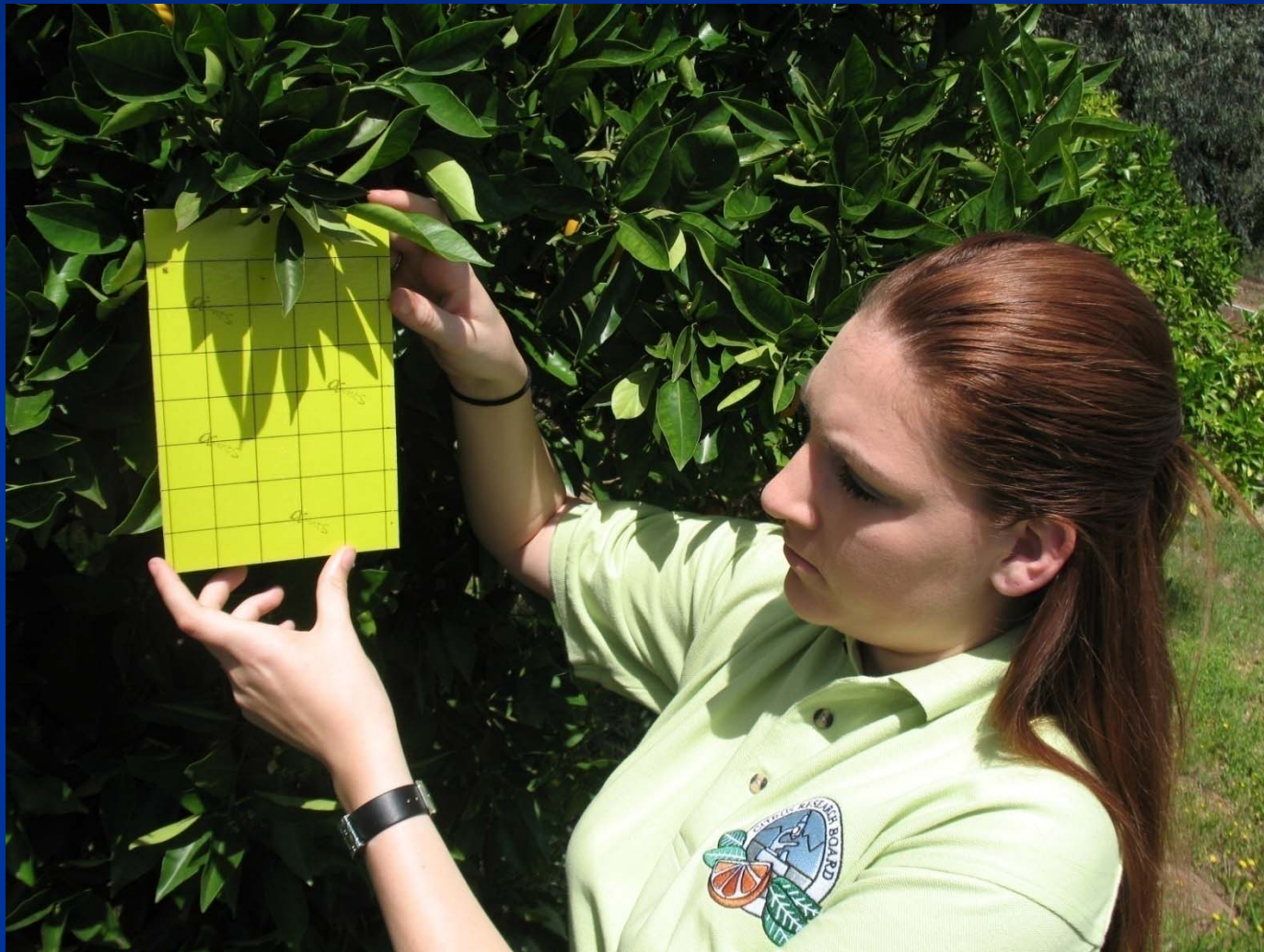
Detection Within Commercial Settings



Current Detection Capabilities



Improved Detection Capabilities



Deploy GPS technologies including handheld data loggers, bar codes





CA Citrus Research Board (559) 738-0246



SITE_1222333450

Do not disturb this tag
Information Contact:
Citrus Research Board
559-738-0246

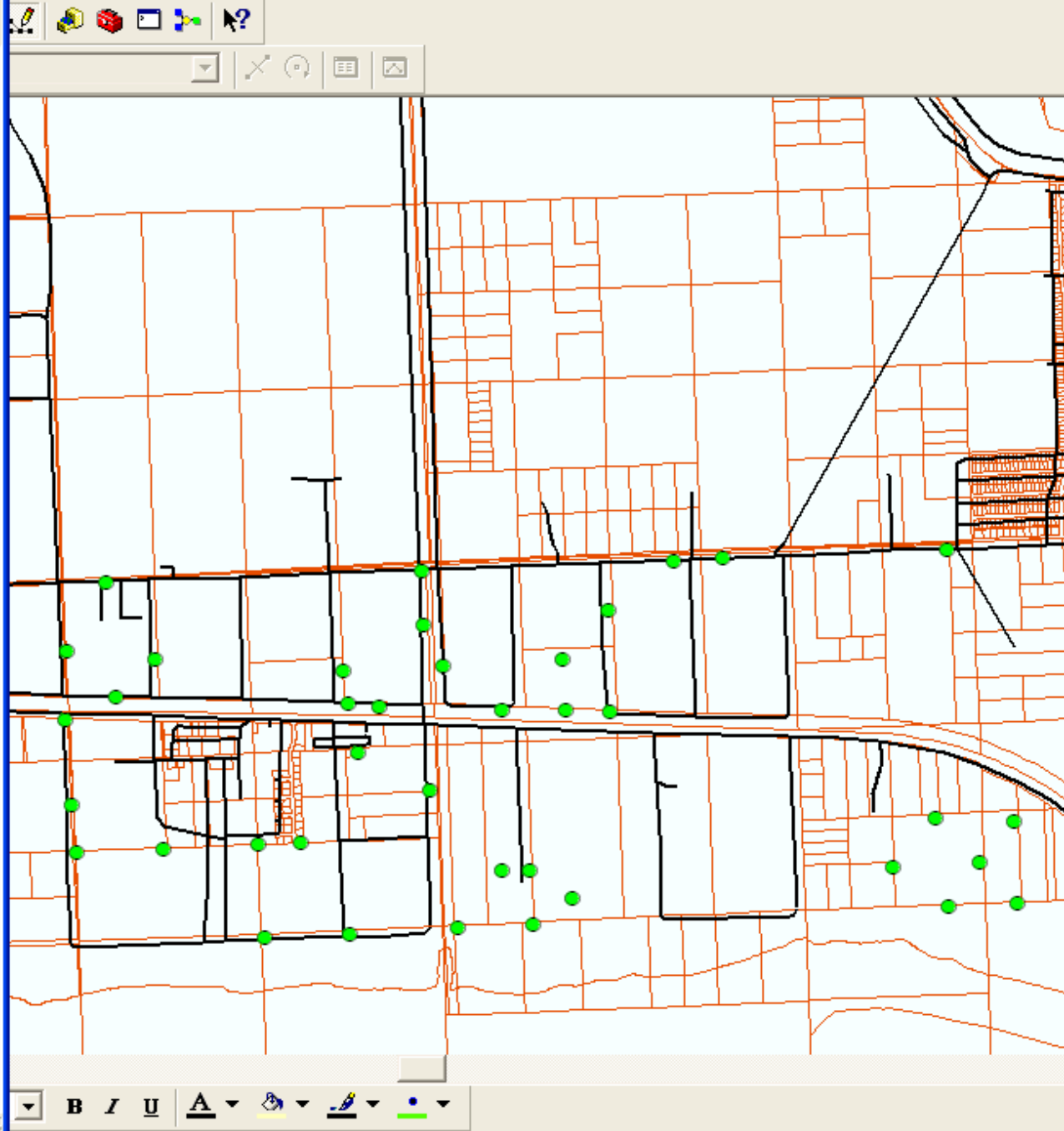




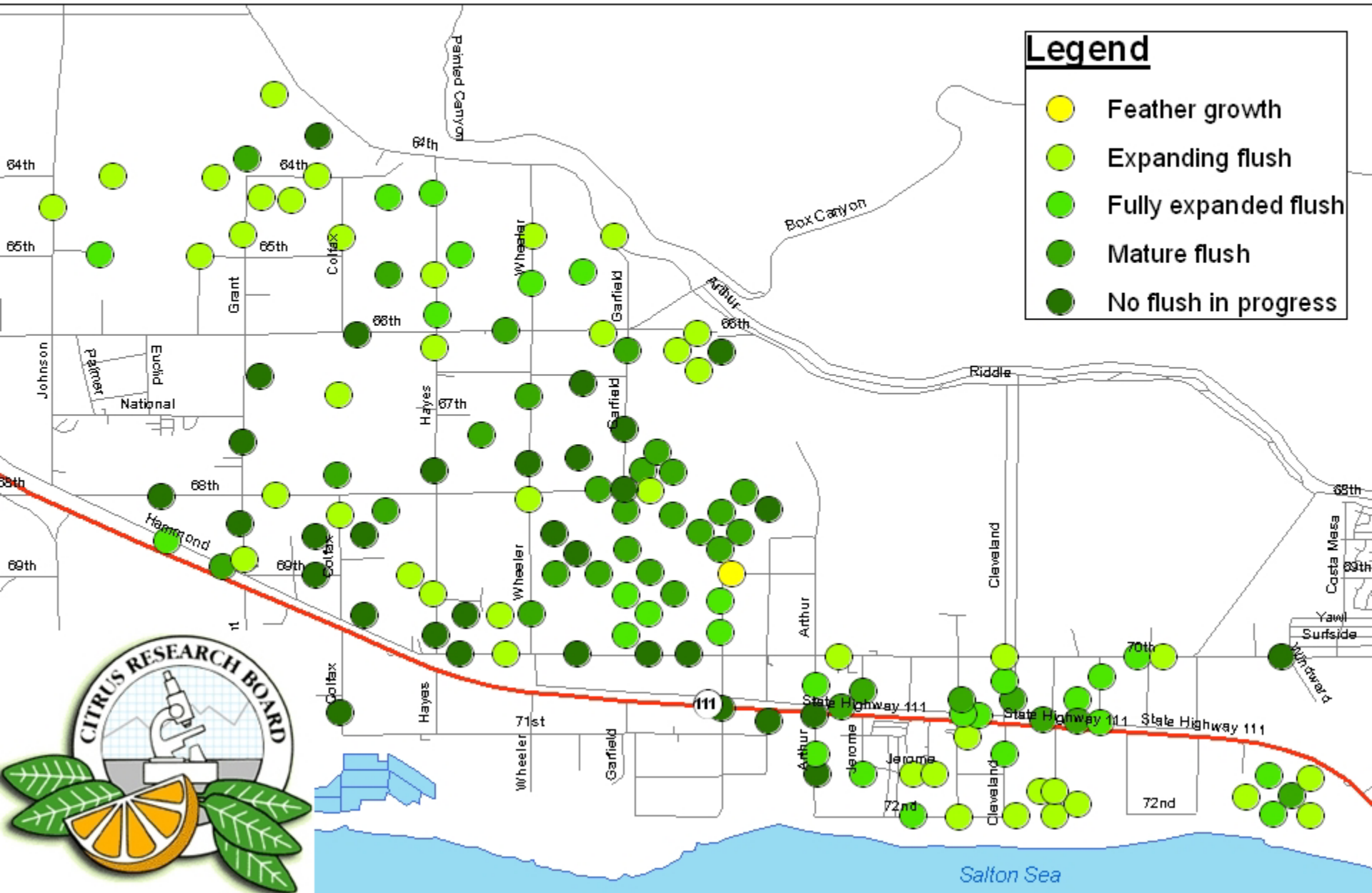


Location: 375,093.405 -489,215.311 Meters

Field	Value
DATE	6/2/2009
VISIT_TYPE	New site
SITE_TYPE	Commercial citrus orchard
SITE_BCD	SITE_19
HOST_PLANT	Citrus
CITRUS_COM	Orange
STATUS	Mature (>5 years)
HEALTH	Healthy
FLUSH	Fully expanded flush
TRAP_TYPE	ACP yellow panel (A)
TRAP_ACTIONC	Install new trap
TRAP_BCD	TACP_A_39
SAMP_METHODC	Visual observation
NO_PER_SAMPN	999
ACP_EXTENT	0
MOST_ACP	
OTHER_ACP	
CONDITION	
INSECT_BCD	
HLB_SYMPT	
SYMPT_EXT	
OTHER_SYMPTC	
OTHER_EXT	
TISSUE_SAMP	
TISSUE_BCD	
OTHER_DIS	
PHOTOGRAPH	Yes
OTHER_PEST	
SITE_CMNT	
BIO_CMNT	
APN	725-100-008
OWNER	
RANCH_NAME	Dudley & Maxfield
BLOCK_ID	
CONTACT_ID	
CONTACT_PH	
LOCATION	
CITY	
OCCUPANT	
PERMISSION	
LITERATURE	
WGS84_LON	-115.962133
WGS84_LAT	33.539908
WGS84_ALT	-177.49
GPS_DATE	90602



Riverside County Pest Control District #2 Pilot Project Trap Map as of 6/8/2009



Develop statewide training programs for PCA's, Master Gardeners, and Others.